

# 把各種活動分類為輕或重吧!

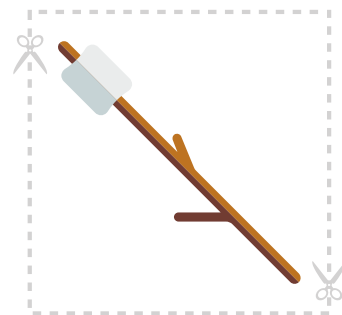
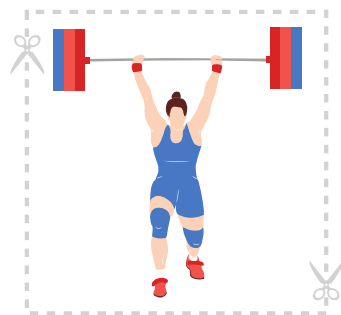
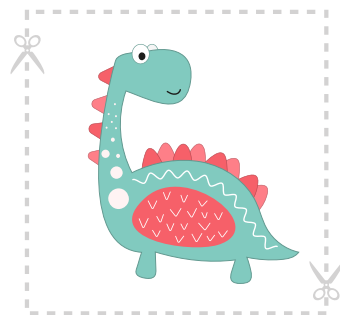
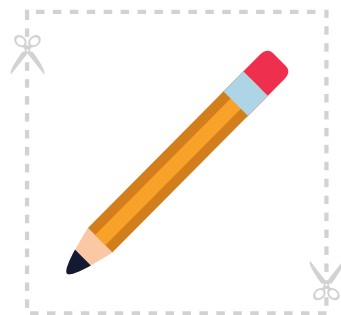
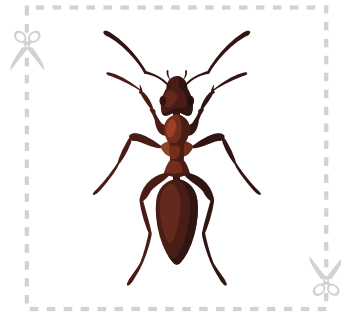
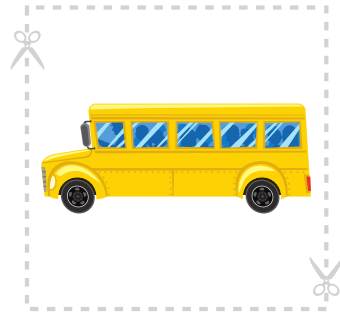
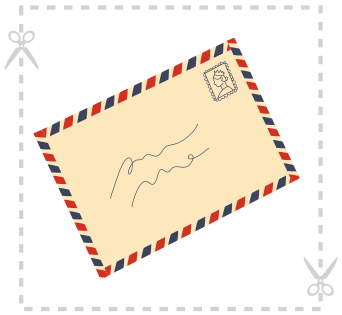
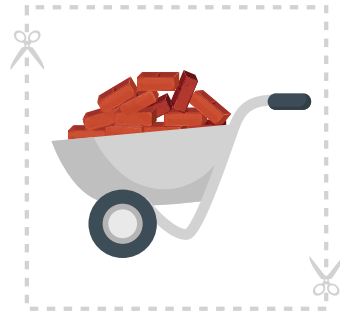
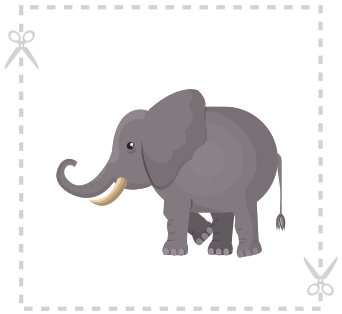
Bǎ gè zhǒng huó dòng fēn lèi wéi qīng huò zhòng ba!

看一看下面的每樣東西，想一想它們是重的還是輕的。

Kàn yī kàn xià miàn de měi yàng dōng xī, xiǎng yī xiǎng tā men shì zhòng de hái shì qīng de.

把它們剪下來，放到下一頁的正確位置。

Bǎ tā men jiǎn xià lái, fàng dào xià yī yè de zhèng què wèi zhì.



把物品貼到下面的“Light”「輕」或“heavy”「重」的地方。  
Bǎ wù pǐn tiē dào xià miàn de “qīng” huò “zhòng” de dì fāng.

輕qīng

重zhòng