

把各种活动分类为轻或重吧!

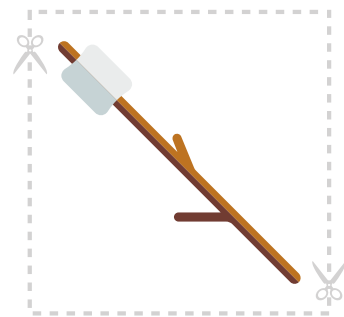
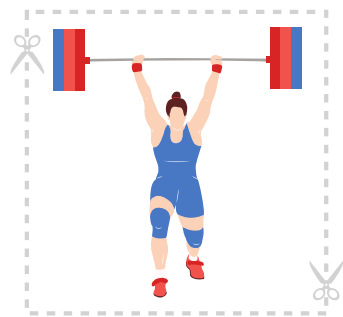
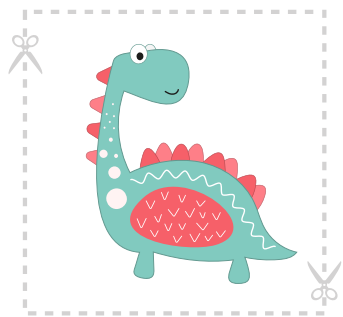
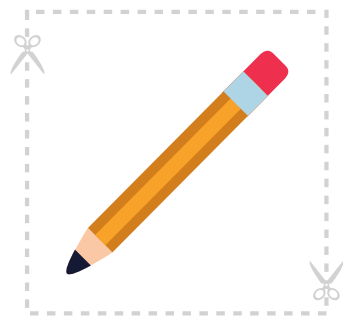
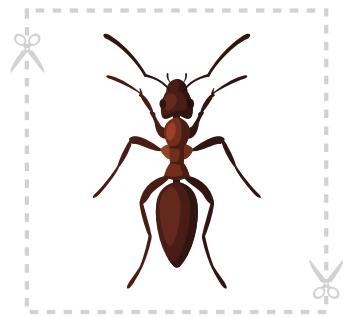
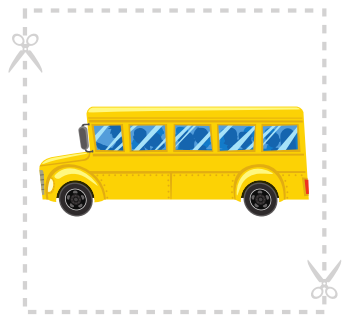
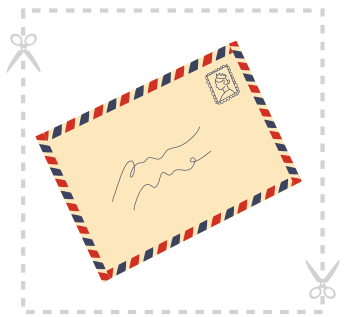
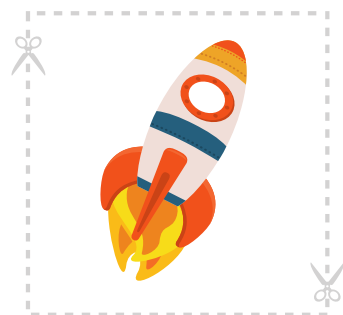
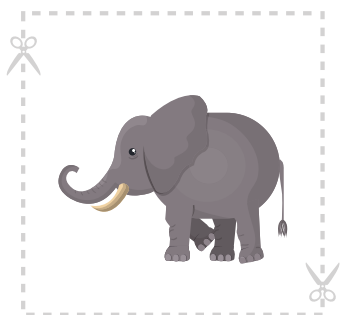
Bǎ gè zhǒng huódòng fēnlèi wéi qīng huò zhòng ba!

看看下面的每样东西，想一想它们是重的还是轻的。

Kàn kàn xiàmiàn de měi yàng dōngxi, xiǎng yīxiǎng tāmen shì zhòng de hái shì qīng de.

把它们剪下来，放到下一页的正确位置。

Bǎ tāmen jiǎn xiàlái, fàng dào xià yī yè de zhèngquè wèizhì.



把物品贴到下面的“Light”(轻) 或 “Heavy”(重) 的地方。
Bǎ wùpǐn tiē dào xiàmiàn de “qīng” huò “zhòng” de dìfāng.

轻qīng

重zhòng