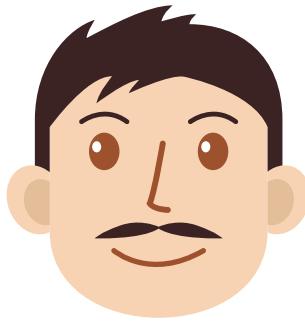


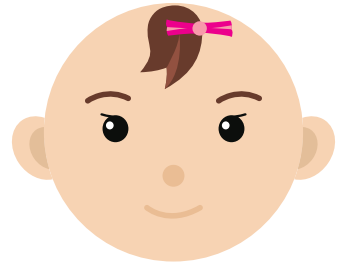
# FAMILY MEMBERS



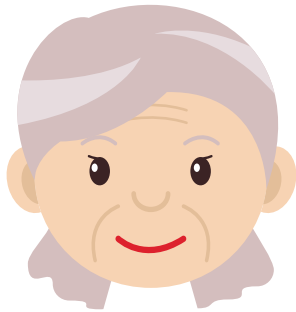
mother



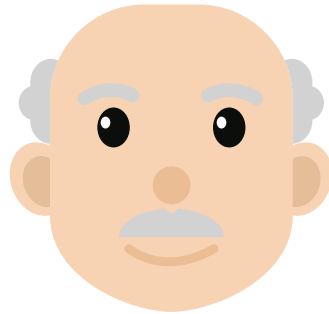
father



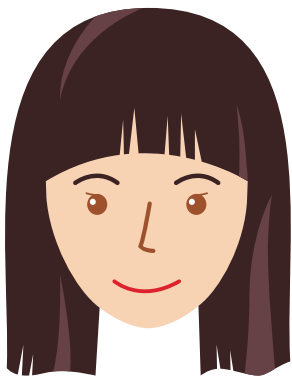
baby



grandmother



grandfather



sister



brother



cousin

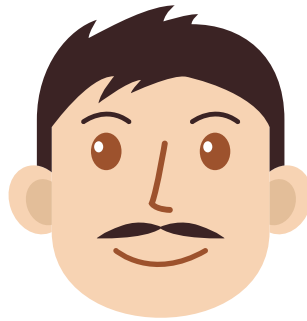
# 家庭成员

(JIÀTÍNG CHÉNGYUÁN)



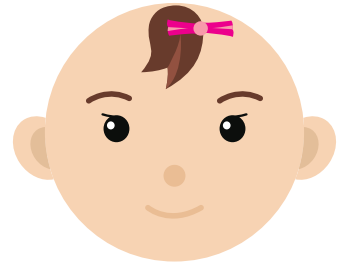
妈妈

(māma)



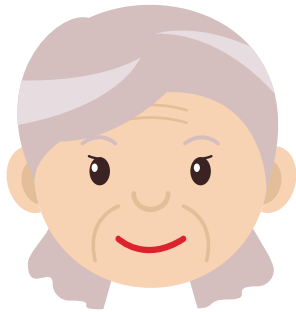
爸爸

(bàba)



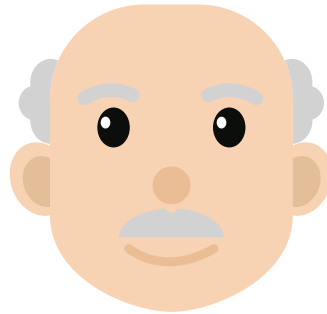
弟弟

(dìdì)



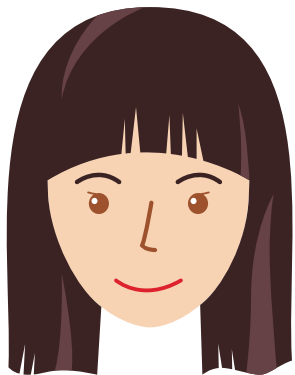
奶奶

(nǎinai)



爷爷

(yéye)



姐姐

(jiějie)



哥哥

(gēge)